



291-0001 White



291-5805 Ermine



291-3720 Light Oyster



291-3719 Champagne



291-3700 Ivory



291-3599 Almond



291-3925 Silk



291-3850 Sand



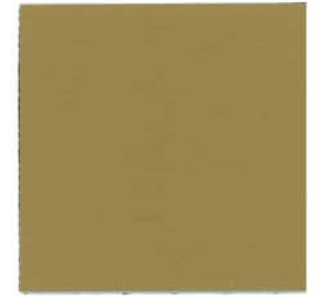
291-3470 Shell



291-3609 Buff



291-3669 Cashew



291-3182 Timber



291-3455 Milkweed



291-3601 Doe



291-3729 Tan



291-1256 Papyrus



291-3926 Cashmere



291-3778 Pecan



291-3779 Taupe



291-3183 Pine Cone



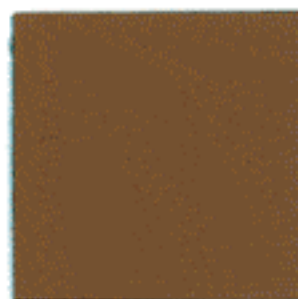
291-5250 Sassy



291-5260 Nectar



291-3620 Praline



291-3610 Hide



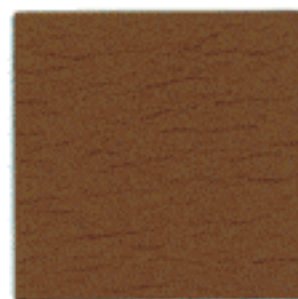
291-3851 Chamois



322-3935 Wheat*



291-3612 Curry



322-8242 Copper*



291-8219 Adobe



291-8243 Apricot



291-8225 Mandarin



291-8241 Hot Sauce



291-1311 Brick



291-1315 Grenadine



291-1176 Red



291-6580 Sorbet



291-3928 Raisinette



291-3469 Garnet



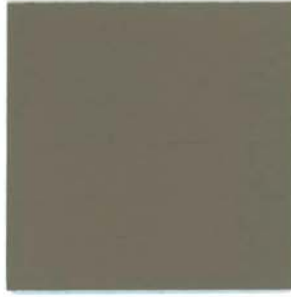
291-1312 Chianti



291-9337 Berry



291-5676 Pelican



291-3602 Stone



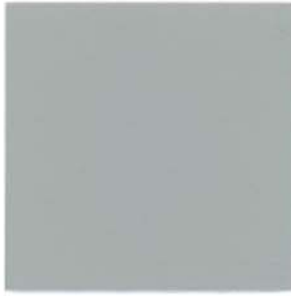
291-3927 Mocha



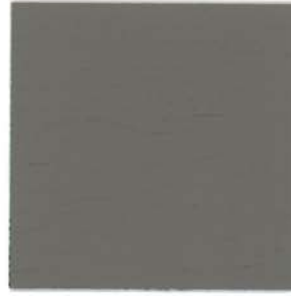
291-3666 Fudge



291-5684 Arctic



291-5666 Dove Grey



291-5708 Granite



291-5763 Charcoal



291-2551 Baltic



291-2555 Nile



291-2556 Admiral



291-9385 Plum



291-2685 Bayou



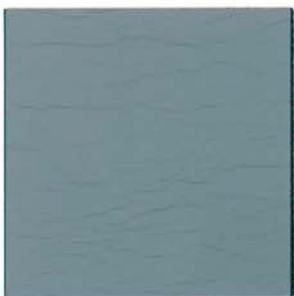
291-2603 Marine



291-2478 Diplomat Blue



322-2691 Midnight*



291-2552 Riviera



291-2554 Sapphire



291-7278 Mayan



291-2553 Cyan



291-5255 Bamboo



291-4468 Palm Leaf



291-4460 Parrot



291-4462 Fern



291-4469 Aloe



291-4461 Cactus



291-4484 Thyme



291-3777 Walnut



322-4498 Green Tea*



291-4351 Shetland



291-4427 Mystic



291-4352 Loden



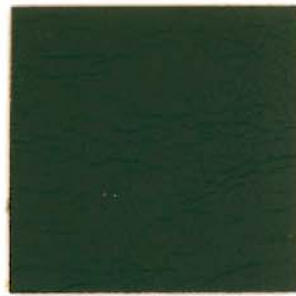
291-4430 Eucalyptus



291-7326 Neptune



291-4261 Juniper



291-4262 Orchard



291-5668 Silver Pearl



291-5806 Schooner



322-5814 Licorice*



291-5607 Raven Wing

Ultraleather® is also available in custom colors.

*Pearlized

Ultraleather™

LUXURIOUS SIMULATED LEATHER ENGINEERED FOR DURABILITY®

Our innovative strengthening technology makes this luxurious fabric exceptionally durable. Created for projects specifying high wear applications, ULTRALEATHER™ exceeds industry abrasion standards with minimal impact. This product was engineered to meet the growing demand for strength and environmental responsibility. It was formulated in our laboratories with a biodegradable rayon backcloth composed of wood bi-product. Designed for longevity, this beautiful fabric tailors easily, cleans effortlessly, and maintains a subtle grain pattern over time that virtually duplicates the surface of genuine leather. ULTRALEATHER™ provides our most extensive color offering, available in a wide variety of in-stock designer shades.

ADVANCED POLYURETHANE STRENGTHENING TECHNOLOGY

- Durable polyurethane alternative to leather and PVC (vinyl)
- Exceeds heavy-duty industry abrasion standards by more than 13 times, surpassing 400,000 double rubs on the Wyzenbeek
- Scratch, nick, and blemish resistant
- Engineered for a unique combination of characteristics including strength, texture, softness and colorfastness

CLIMATE CONTROL TECHNOLOGY

- Clinically proven to be more resistant to temperature changes than vinyl and genuine leather
- Stays cooler than genuine leather in warm weather conditions
- Resists cold weather stiffening and cracking

ENVIRONMENTALLY CONSCIOUS TECHNOLOGY

- 100% biodegradable backcloth
- Void of plasticizers, heavy metals, formaldehyde, and pyroxylin
- Void of persistent organic pollutants (POPs)
- Captures and recycles 99% of production solvents
- Potentially toxic aftercare not required
- Meets the 2005 standards established by international organizations such as Greenguard™ and Oeko-Tex
- Passes California Protocol 01350 for Volatile Organic Compound Emissions

STAIN RESISTANCE TECHNOLOGY

- Cleans effortlessly with soap & water
- Lifts most stains with alcohol-based solutions like Fantastik® and Formula 409®
- Disinfects with 5:1 bleach solution

STAIN

Ketchup, Mayonnaise, Mustard
Butter, Salad Oil
Red Wine, Liquor
Coffee, Tea, Coca-Cola®
Make-up, Face Cream, Lipstick
Machine Oil
Urine, Blood
Steak Sauce, Soy Sauce
Chocolate
Milk

MILD DETERGENT

•
•
•
•
•
•
•
•
•
•

SPECIFICATIONS:

ISO 9001-CERTIFIED PRODUCTION FACILITY

COMPOSITION:	100% POLYURETHANE SURFACE WITH 100% REINFORCED RAYON BACKING
WEIGHT:	APPROX. 9.3 OZ. PER SQUARE YARD (APPROX. 14 OZ. PER LINEAR YARD)
THICKNESS:	APPROX. 0.95 MM
WIDTH:	54"
PUT-UP:	APPROX. 33 YD. R.O.T.

CHARACTERISTICS:

ABRASION:	ASTM D 4157 / 400,000 DOUBLE RUBS
TENSILE STRENGTH:	ASTM D 5034
TEAR STRENGTH:	ASTM D 1117 SEC 14
DIMENSIONAL CHANGE:	ASTM D 3597
TACK-TEAR RESISTANCE:	ASTM D 751
STRETCH & SET:	SAE J855
PILLING RESISTANCE:	ASTM D 3512

MEETS OR EXCEEDS:

COLORFASTNESS:

CROCKING:	AATCC 8, CLASS 5 WET & DRY
LIGHT:	AATCC 16 E, AATCC 16 A, CLASS 4-5
GAS:	AATCC 23, CLASS 4.5
OZONE:	AATCC 109, GRADE 5

F/R RATING:

FMVSS 302	PASS
CA 117 E	CLASS 1
UFAC	CLASS 1
NFPA 260	CLASS 1
ASTM E 84 (ADHERED)	CLASS A

Can be treated to meet FAR specifications.

This fabric, when used with other compatible furniture components, has been shown to perform well under the fire test conditions of California Technical Bulletin 133.



Ultrafabrics LLC 400 Executive Blvd. Elmsford, New York 10523 T: 1.914.460.1730 F: 1.914.347.1591 www.ultrafabricsllc.com

FOR MORE INFORMATION PLEASE CALL: SALES & MARKETING 1.888.361.9216 • CUSTOMER SERVICE 1.877.309.6648

ULTRALEATHER™, ULTRALEATHER BRISA™ AND ULTRA TECH 7000® ARE REGISTERED TRADEMARKS OF ULTRAFABRICS, LLC 2007